



PILOT JACKET - PJ10

REF: 30103000000PJ10PW



Description:

A workwear classic, the 4-in-1 pilot jacket with 6 spacious pockets and high cotton content for superior comfort.

Features:

- High cotton content for superior comfort
- Knitted cuffs and hem
- 6 pockets for ample storage
- Jacket can be worn four ways for multi use
- Phone pocket
- Two-way zip for quick and easy access
- Texpel stain resistant finish repels dirt and stains

Composition and density:

Shell Fabric: 60% Cotton, 40% Polyester, Shower-Proof Finish 240g

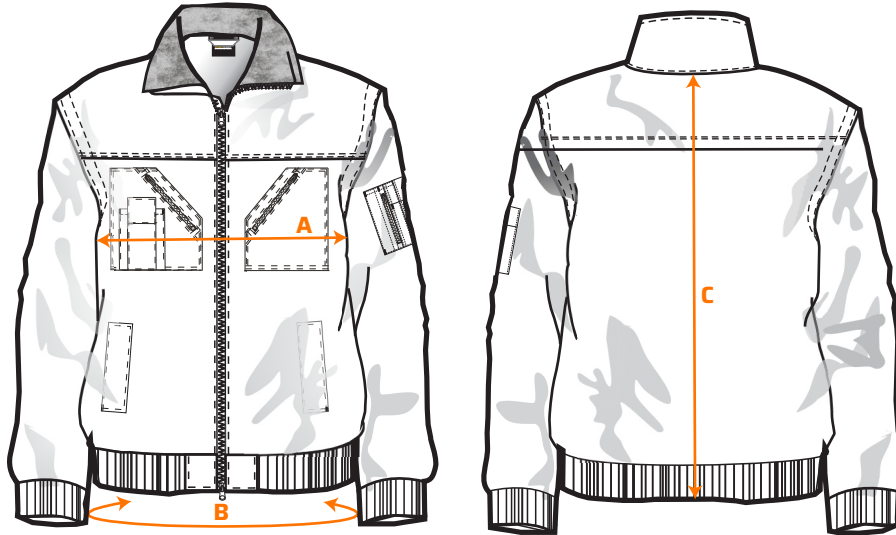
Lining Fabric: 100% Polyester 50g

Filling Fabric: 100% Polyester Wadding 120g

Removeable Lining: 100% Polyester Fur Lining 440g

PILOT JACKET - PJ10

REF: 30103000000PJ10PW



Size chart:

Sizes (cm)		XS	S	M	L	XL	XXL	3XL	4XL	5XL
Chest	A	110	118	126	134	142	150	158	166	174
Hem (relaxed)	B	76	84	92	100	108	116	124	132	140
Length	C	72	72	74	74	76	76	76	78	78



Available colors and sizes:

- Navy: XS - 5XL
- Red: XS - 5XL
- Black: XS - 5XL

Wash care:

