



OUTCOACH JACKET - S555

REF: 30103000000S555PW



Description:

This high performance jacket offers maximum waterproof, windproof and breathable protection for year round performance. Using a highly durable outer fabric, with an air permeable mesh lining, this jacket ensures total comfort in foul conditions. High specification features, such as water resistant zippers, ergonomic cut, engineered storm hood and multiple pockets provide superb function. A sporty fit and low profile design ensure this is the jacket of choice for demanding conditions.

Features:

- Extremely water resistant fabric finish, water beads away from fabric surface
- Abrasion resistant oxford polyester
- Lined for added warmth and comfort
- Hook and loop cuffs for a secure fit
- Water resistant zips to prevent water penetration
- Ideal for corporate wear and custom finishes
- Waterproof with taped seams preventing water penetration
- Front zip opening for easy access
- Storm flap front to protect against the elements
- Pack away hood for added functionality
- 4 pockets for ample storage, Zipped pockets, Concealed mobile phone pocket
- Print access for corporate branding
- Made of durable breathable, windproof and water resistant fabric

Composition and density:

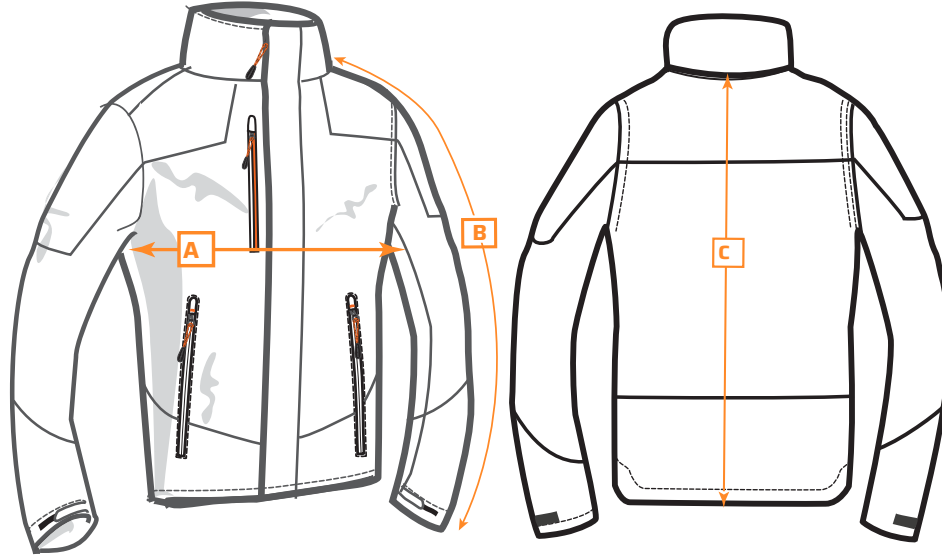
Shell Fabric: 100% Polyester Oxford 600D 230g

Additional Lining Fabric Info: Body Lining: 100% Polyester Mesh, 65g. Sleeve: 100% Polyester 190T Taffeta, 60g



OUTCOACH JACKET - S555

REF: 30103000000S555PW



Size chart:

Sizes (cm)		XS	S	M	L	XL	XXL	3XL	4XL	5XL
1/2 Chest	A	51.5	55	58.5	62	65.5	69	72.5	76	79.5
Sleeve length	B	79.5	81	82.5	84	85.5	87	88.5	90	91.5
Length	C	78	79	80	81	82	83	84	85	86

Available colors and sizes:

- Navy: S - 3XL
- Black: S - 5XL

Washing care:



EN 343 Class 3:3 X WP 10,000mm, MVP 15,000g/M²/24hr