



# WINTER COVERALL - S585

REF: 30103000000S585PW



EN 17353  
Type B2



EN 343  
CLASS 3:1X



EN 342



## Description:

Full waterproof protection and outstanding durability are key features of this winter padded coverall. The contemporary design is complemented by a high quality finish and close attention to detail throughout. Key features include: reflective tape for added visibility, reinforced knee patches for optimum strength, multiple pockets for storage and zipped ankles for easy fitting.

## Features:

- Extremely water resistant fabric finish, water beads away from fabric surface
- Abrasion resistant oxford polyester
- Quilt lined for thermal insulation
- Inner ribbed cuffs for warmth and comfort
- Zipped ankles for easy fitting over work boots
- Double-layer reinforced knee protection for extra strength and durability
- Fully elasticated waistband for ultimate wearer comfort
- Reflective tape for increased visibility
- EN342 Protection against cold certified up to -40°C
- Taped seams to provide additional protection
- 5 pockets for ample storage, Phone pocket
- Pack away hood for added functionality
- Hook and loop cuffs for a secure fit
- Concealed stud and zip fastening
- Two-way zip for quick and easy access
- Contrast panels for protection against dirt
- D-ring for keys or ID cards

## Composition and density:

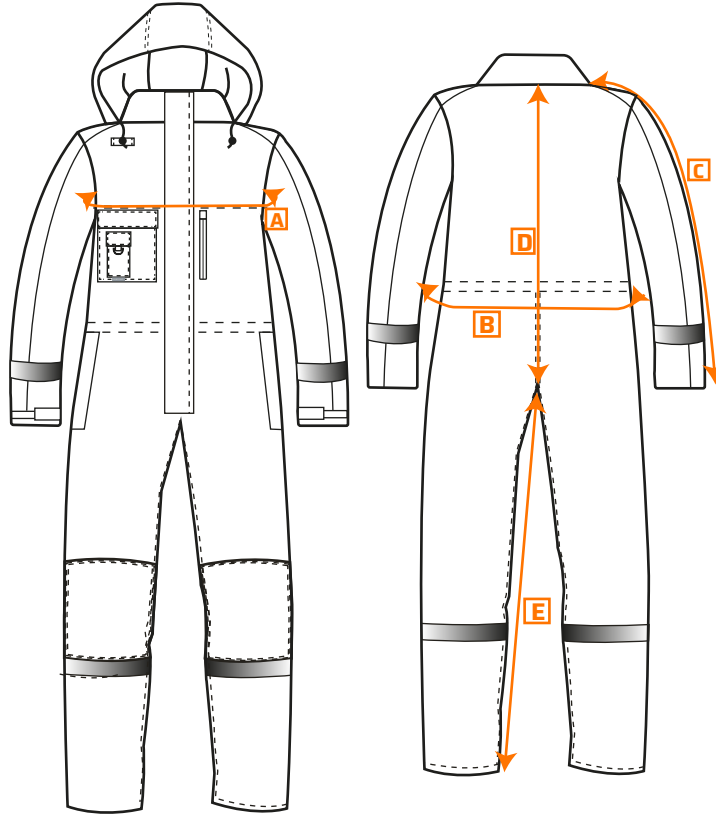
Shell Fabric: 300D Industry: 100% Polyester, 300D Oxford Weave with a Stain Resistant finish, Double PU Coated 190g

Lining Fabric: 100% Polyester 60g

Filling Fabric: 100% Polyester 170g

# WINTER COVERALL - S585

REF: 30103000000S585PW



Size chart:

Sizes (cm)		S	M	L	XL	XXL	3XL	4XL
Chest	A	122	130	138	146	154	162	170
Waist (relaxed)	B	86	94	102	110	118	126	134
Sleeve length	C	87	88	89	90	91	92	93
Nape to Crotch	D	94	96	98	100	102	104	106
Inside leg	E	79	79	79	79	79	79	79

Available colors and sizes:

- Black: S - 2XL
- Grey: S - 2XL
- Navy: S - 2XL
- Red: S - 2XL

Washing care:



EN 343 Class 3:1 X WP  
15,000mm  
EN 342 0.341M<sup>2</sup>. K/W (B), 2, X  
EN 17353 Type B2