



ACTION TROUSER - S887

REF: 30103000000S887PW



Description:

Superior comfort and functionality form the appeal of the Action Trousers. The secret to the popularity of this style is outstanding value, strong industrial colours and a wide range of size and length options. Made from quality poly-cotton, features include multiple zip pockets, reinforced fabric at seat and knee areas with the added option of accommodating knee pads. A true market leader.

Features:

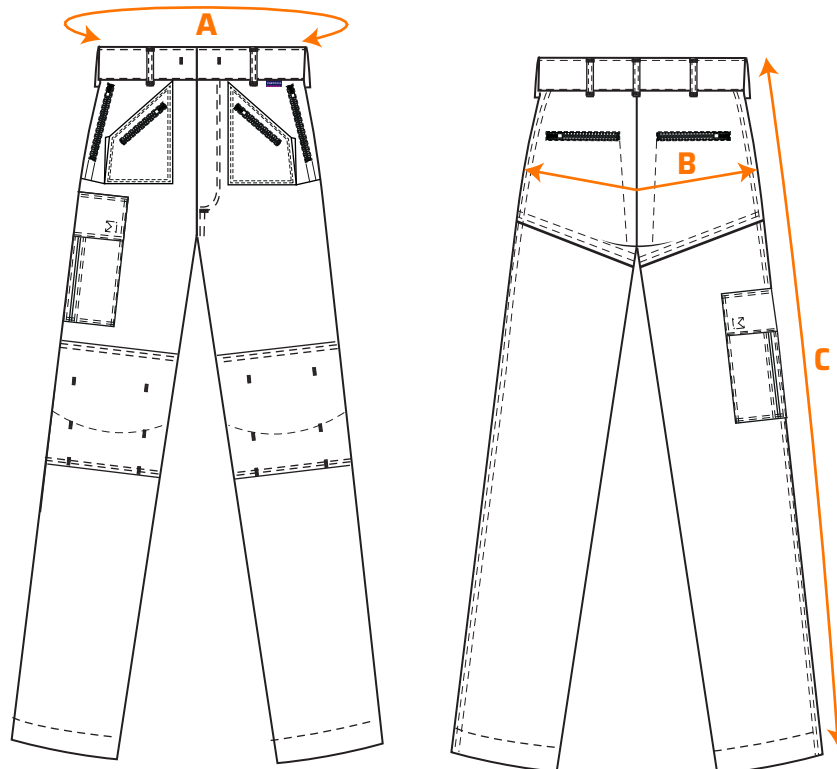
- Durable polycotton fabric for high performance and maximum wearer comfort
- Double-layer reinforced knee protection for extra strength and durability
- 11 pockets for ample storage
- Two back zip pockets
- Reinforced seams for extra durability and strength
- Easy access cargo pocket
- Knee pad pockets to facilitate knee pads
- Zipped pockets
- 40+ UPF rated fabric to block 98% of UV rays

Composition: Shell Fabric: Kingsmill: 65% Polyester, 35% Cotton 245g

Available colors and sizes: ■ Black: 26 - 56 ■ Grey: 28 - 46 ■ Navy Blue: 26 - 56 ■ Olive Green: 30 ■ Red: 32

ACTION TROUSER - S887

REF: 30103000000S887PW



Size chart:

Sizes (cm)		26	28	30	32	33	34	36	38	40	42	44	46	48	50	52	54	56	58
Waist	A	69	74	79	84	86.5	89	94	99	104	109.5	114.5	119.5	124.5	129.5	134.5	139.5	144.5	149.5
Seat	B	96	100	104	108	110	112	116	120	124	130	134	138	144	148	152	156	160	164
Length	C	105.5	106	106.5	107	107.3	107.5	108	108.5	109	109.5	110	110.5	111	111.5	112	112.5	113	113.5

Washing care:

