



WX3 WORK TROUSER - T701

REF: 30103000000T701PW



Description:

Contemporary work trouser that fits as good as it looks. Made from durable poly-cotton canvas fabric and includes triple stitched seams, these trousers have been built to last. Innovative design features like stretch panelling provides excellent comfort and flexibility in key movement areas. Other practical features include high rise back waistband with side elastication, knee pad pockets offer extra protection in all working conditions and multiple pockets provide secure storage.

Features:

- Durable soft polycotton canvas for high performance and maximum wearer comfort
- Innovative stretch panelling in key movement areas provides excellent comfort and flexibility
- 8 pockets for ample storage, Rule pocket, Multiple utility pockets providing ample storage, Detachable ID pocket, Handy zipped side thigh pocket, Two tier knee pad pockets allowing two positioning options
- Triple-stitched seams for extra durability
- Contemporary design with an ergonomic cut
- Crotch gusset to reduce stress and prevent seam failure
- Adjustable hem to accommodate all leg lengths
- 4-way stretch fabric for ease of movement and added comfort
- Free pair of kneepads included with this trouser
- High rise back waistband ensures protection in all working positions
- Gripper elasticated inner waistline helping keep upper body garments in place
- Side elastic waist for ultimate wearer comfort
- Reflective trim for increased visibility and safety
- Modern styling with contrast piping
- Contrast colouring for added style

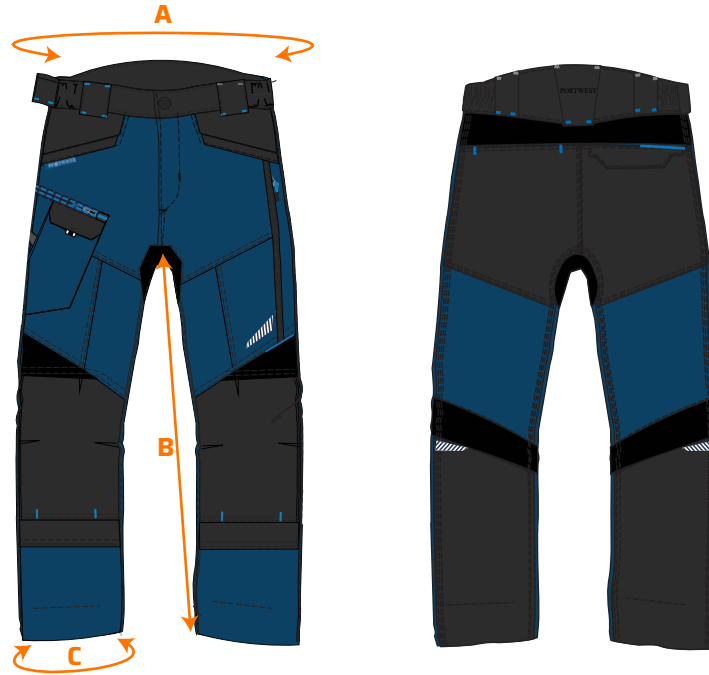
Composition and grammage:

Shell Fabric: Kingsmill Canvas: 65% Polyester, 35% Cotton Canvas Peach Finish 280g
Contrast Fabric: CorePro: 88% Nylon 12% Elastane



WX3 WORK TROUSER - T701

REF: 30103000000T701PW



Size chart:

Sizes (cm)		28"	30"	32"	33"	34"	36"	38"	40"	41"	42"	44"	46"	48"
Waist (relaxed)	A	68	73	78	80.5	83	88	93	98	100.5	103	108	113	118
Waist (stretched)		78	83	88	90.5	93	98	103	108	110.5	113	118	123	128
Leg length	B	79	79	79	79	79	79	79	79	79	79	79	79	79
Hem / Leg opening	C	45	45	45	45	46	47	47	49	50	51	52	53	54

*Hem length extendable up to 5 cm.



Available colors and sizes:

■ Olive Green: 28 - 48

■ Persian Blue: 28 - 48

■ Deep Red: 28 - 48

■ Metal Grey: 28 - 48

Washing care:



CE EN 14404: 2004 + A1: 2010 Type 2 Level 0 (When used in combination with S156)