



WOMEN'S SOFTSHELL JACKET CHARLOTTE - TK41

REF: 30103000000TK41PW



Description:

A softshell jacket cut for women. Ideal for all occasions with its windproofing capability, this is a more stylish alternative to a traditional fleece. The design is flattering and the features, such as the internal chin guard, water-resistant zip security pockets and adjustable drawcord hem, are extremely practical.

Features:

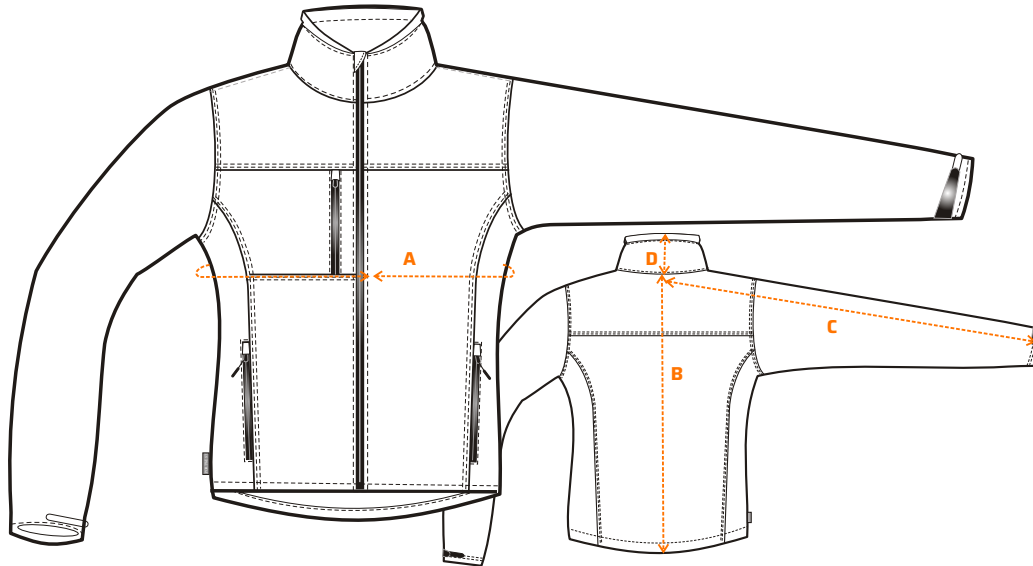
- Made of durable breathable, windproof and water resistant fabric
- Micro polar fleece lined and bonded with shell
- Hook and loop cuffs for a secure fit
- Water resistant zips to prevent water penetration
- Drawcord adjustable hem
- Extremely water resistant fabric finish, water beads away from fabric surface
- 6 pockets for ample storage including a phone pocket
- Chin guard for added comfort and stability
- Fleece lined collar to trap the heat and increase warmth

Composition and density: Shell Fabric: 94% Polyester / 6% Elastane, with 100% Polyester Micro Polar Fleece Softshell - 320 g.

Available colors and sizes: ■ Black: XS - 2XL ■ Navy: XS - 2XL

WOMEN'S SOFTSHELL JACKET CHARLOTTE - TK41

REF: 30103000000TK41PW



Size chart:

Sizes (cm)		XS	S	M	L	XL	2XL
Chest contour	A	99	104	109	114	119	124
Length	B	65	66	68	70	72.5	74.5
Sleeve length	C	76.5	79	81.5	84	86.5	89
Collar length	D	7.5	7.5	7.5	7.5	7.5	7.5

Wash care:



Waterproof / Breathability - (WP 3,000mm, MVP 600g/M²/24hr)