



SOFTSHELL JACKET (3L) - TK50

REF: 30103000000TK50PW



Description:

Up-to-the-minute and stylish, this innovative jacket offers a windproof, water-resistant breathable membrane with the added luxury of a laminated micro polar fleece. The softshell material stretches for added freedom of movement.

Features:

- Made of durable breathable, windproof and water resistant fabric
- Micro polar fleece lined and bonded with shell
- Generous fit for wearer comfort
- Waterproof zips to prevent water penetration
- Hook and loop cuffs for a secure fit
- Chin guard for added comfort and stability
- Extremely water resistant fabric finish, water beads away from fabric surface
- 6 pockets for ample storage, Phone pocket, Multiple utility pockets providing ample storage
- Fleece lined collar to trap the heat and increase warmth

Composition and density: Shell Fabric: 94% Polyester, 6% Elastane, with 100% Polyester Micro Polar Fleece Softshell 310g

Available colors and sizes:

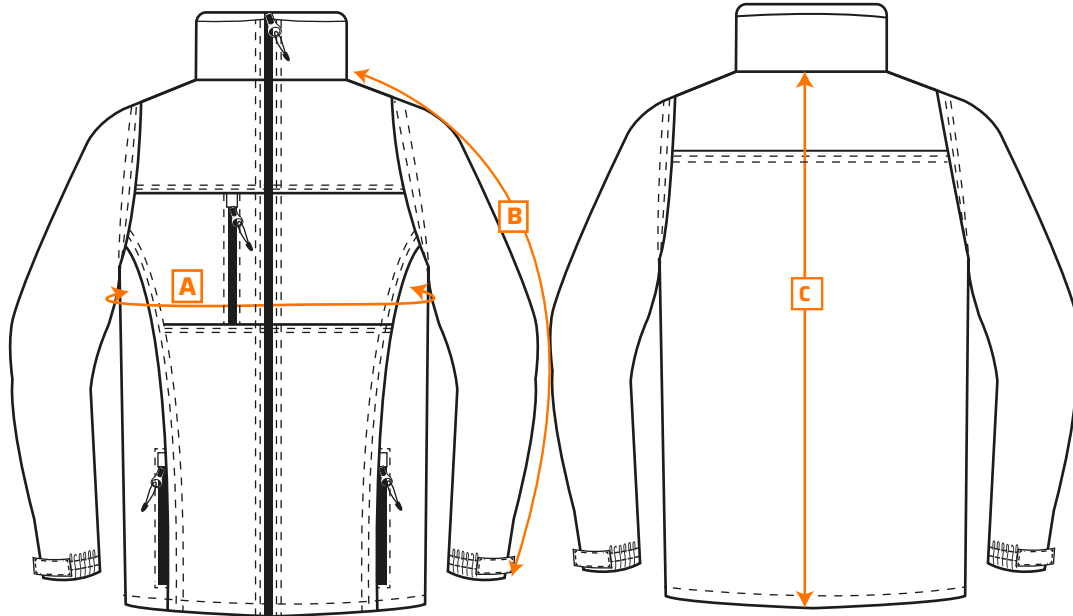
■ Black: XS - 5XL

■ Grey: S - 2XL

■ Navy: XS - 5 XL

SOFTSHELL JACKET (3L) - TK50

REF: 30103000000TK50PW



Size chart:

Sizes (cm)		XS	S	M	L	XL	XXL	3XL	4XL	5XL
Chest	A	106	114	122	130	138	146	154	162	170
Sleeve length	B	80	81	82	83	84	85	86	87	87
Length	C	70	70	70	72	72	72	74	74	74

Washing care:



Waterproof / Breathability - WP
8,000mm, MVP 3,000g/m²/24hr