



DANUBE TROUSER - TX61

REF: 30103000000TX61PW



Description:

The TX61 trouser is tough and durable with a relaxed fit. Subtle articulation allows for increased freedom of movement and the elasticated waistband ensures comfort and a universal fit.

Features:

- Hard wearing durable twill fabric with excellent dye retention
- Reflective piping for increased visibility
- 9 pockets for ample storage, Double rule pocket, Phone pocket, Two back patch pockets
- Hammer loop for secure storage of work tools
- Bartacked at all stress points
- Knee pad pockets to facilitate knee pads
- Half elasticated waist for a secure and comfortable fit
- D-ring for keys or ID cards
- 40+ UPF rated fabric to block 98% of UV rays

Composition and density: Shell Fabric: Kingsmill: 65% Polyester, 35% Cotton 245g

Available colors and sizes: ■ Black: S - 3XL

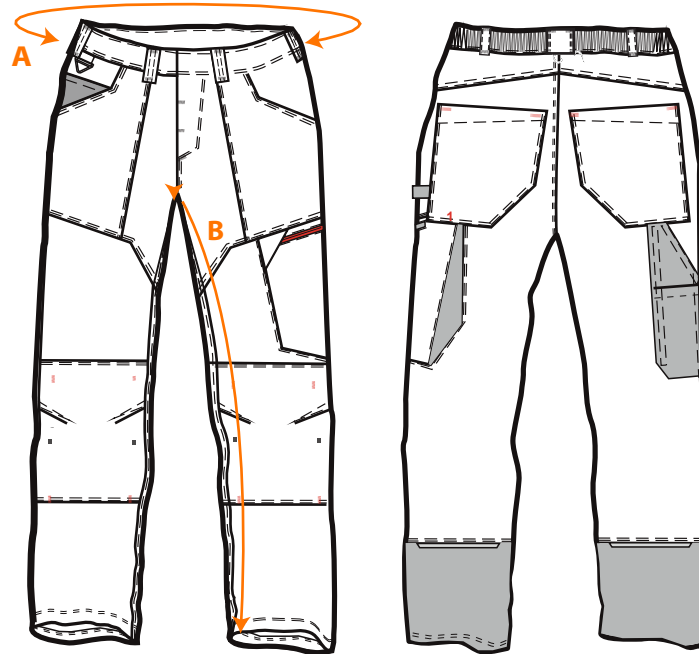
Wash care:





DANUBE TROUSER - TX61

REF: 30103000000TX61PW



Size chart:

Sizes (cm)		XS	S	M	L	XL	XXL	3XL	4XL
Waist (relaxed)	A	64	72	80	88	96	104	112	120
Inside leg	B	79	79	79	79	79	79	79	79