



PRO HIGH VISIBILITY 3-IN-1 JACKET - C469

REF: 30104000000C469PW



EN 342



EN 343
CLASS 3:1X



EN ISO 20471
CLASS 3



Description:

Made from 300D Oxford weave fabric, this stylish jacket offers maximum waterproof and windproof protection for year-round performance. This jacket is highly adaptable and can be worn in three unique combinations, which adds to its overall versatility. Numerous interior and exterior pockets afford excellent personal security for your phone or tablet. A sporty fit and low profile contemporary design ensure this is the jacket of choice for demanding conditions.

Features:

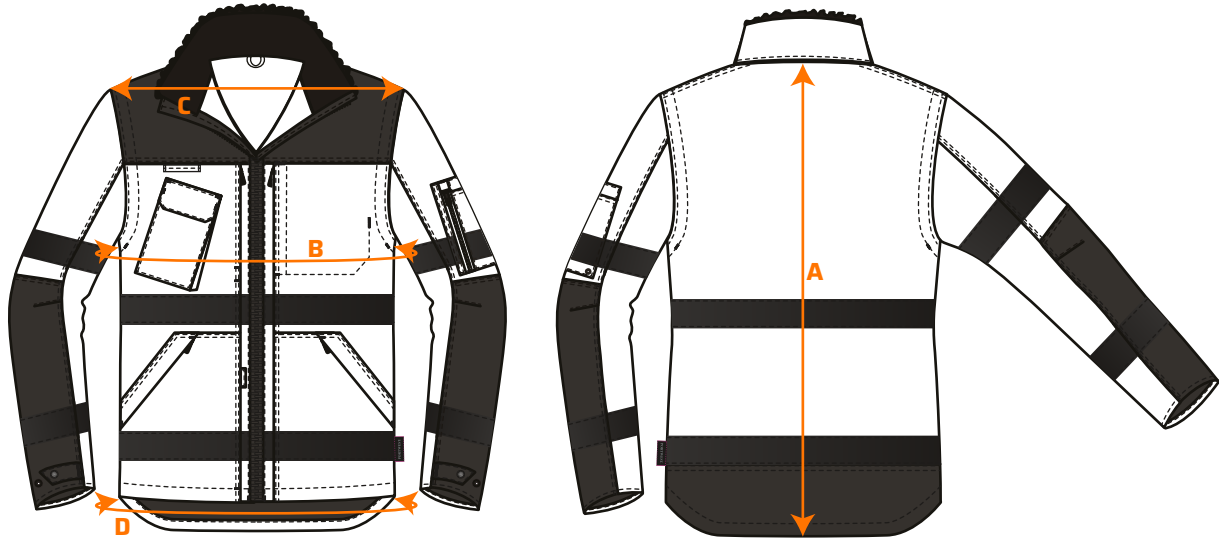
- Waterproof with taped seams preventing water penetration
- Extremely water resistant fabric finish, water beads away from fabric surface
- EN342 Protection against cold certified up to -40°C
- Detachable sleeves, fur liner and fur collar provide multi-way options for the wearer
- Inner knitted cuff
- Stud adjustable cuffs for a secure fit
- Pre-bent sleeves allow for increased freedom of movement
- Reflective tape for increased visibility
- D-ring for keys or ID cards
- Two-way zip for quick and easy access
- Concealed detachable hood
- Radio loop for easy clipping of a radio
- 9 pockets for ample storage, Phone pocket, External tablet pocket for safe storage
- 40+ UPF rated fabric to block 98% of UV rays
- Certified to EN ISO 20471 after 50x washes
- CE certified
- Jacket can be worn three ways for multi use
- Detachable lining for added versatility in all weather conditions

Composition and density:

Shell Fabric: 300D Industry: 100% Polyester, 300D Oxford Weave with a Stain Resistant finish, Double PU Coated 190g
Additional Lining Fabric Info: 100% Polyester 60g
100% Polyester Fur Lining 400g
Additional Filling Fabric Info: Sleeve: 100% Polyester Filling 120g

PRO HIGH VISIBILITY 3-IN-1 JACKET - C469

REF: 30104000000C469PW



Size chart:

Sizes (cm)		S	M	L	XL	XXL	3XL
Length	A	80	81	82	83.5	84.5	85.5
Chest	B	108	116	124	136	144	152
Shoulder to shoulder	C	44	46.5	49	52.5	55	57.5
Hem	D	108	116	124	136	144	152

Available colors and sizes: ■ Yellow/Black: S - 3XL

■ Orange/Black: S - 3XL

Wash care:



EN ISO 20471 Class 3
RIS 3279 TOM Issue 2 (Orange Only)
EN 343 Class 3:1 X WP 15,000mm
EN 342 0.344 (M².K/W), 2, X