



HIGH VISIBILITY FLEECE W/ KNIT LINING - F300

REF: 30104000000F300PW



EN 14058
CLASS 2



EN ISO 20471
CLASS 3

Description:

The F300 fleece guarantees to keep you safe, visible and warm on cold windy days. Features include an internal patch pocket, two secure side pockets with zips and an elasticated drawcord waist for a more comfortable fit.

Features:

- Anti-pill durable fleece fabric
- Reflective tape for increased visibility
- 3 pockets for ample storage
- Interactive zip for added functionality
- Elastic waist with toggle for a secure and comfortable fit
- Elasticated cuffs for a secure fit
- 40+ UPF rated fabric to block 98% of UV rays
- Certified to EN ISO 20471 after 25x washes
- Contrast navy collar and zip for added style
- Complies with RIS 3279-TOM for rail industry (orange only)

Composition and density:

Shell Fabric: 100% Polyester, Anti-Pill finish Fleece - 300 g.

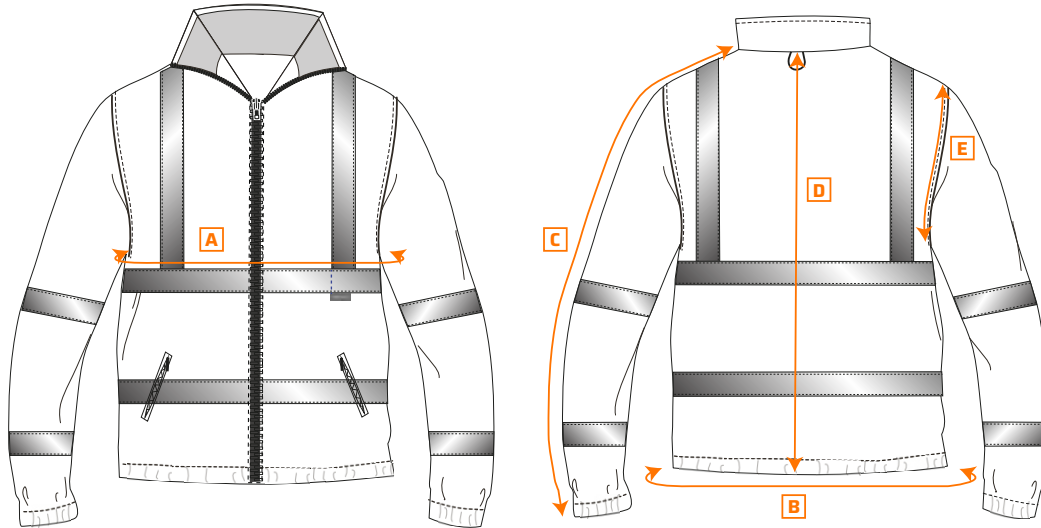
Lining Fabric Info: Body: 100% Polyester Mesh - 60 g. | Sleeve/Pocket lining: 100% Polyester Taffeta - 60 g.

Available colors and sizes: ■ Yellow: XS - 5XL

■ Orange: XS - 5XL

HIGH VISIBILITY FLEECE W/ KNIT LINING - F300

REF: 30104000000F300PW



Size chart:

Sizes (cm)		XS	S	M	L	XL	XXL	3XL	XXL	3XL
Chest contour	A	106	114	122	130	138	146	154	162	170
Hem	B	106	114	122	130	138	146	154	162	170
Sleeve length	C	80	81	82	83	84	85	86	87	88
Length	D	72	72	72	72	72	72	72	72	72
Arm contour	E	27	28	29	30	31	32	33	34	35

Wash care:



EN 14058 - Class 2
EN ISO 20471 - Class 3