



HIGH VISIBILITY LONG SLEEVE POLO EN ISO 20471 CLASS 3 - S277

REF: 30104000000S277PW



EN ISO 20471
CLASS 3

Description:

Thoughtful details and a high quality construction mean the S277 polo shirt is more comfortable and longer lasting than leading competitors. Ideal for warmer working conditions.

Features:

- CE certified
- Ribbed cuffs for added comfort
- Generous fit for wearer comfort
- Reflective tape for increased visibility
- 40+ UPF rated fabric to block 98% of UV rays
- Quality wicking fabric finish enhances drying and aids stain removal
- Superior styling with a contrast collar and fluorescent stripe
- Bio motion tape pattern to improve recognition of human shape at distance
- Breathable fabric to draw moisture away from the body keeping the wearer cool, dry and comfortable
- Certified to EN ISO 20471 after 50x washes
- Complies with RIS 3279-TOM for rail industry (orange only)

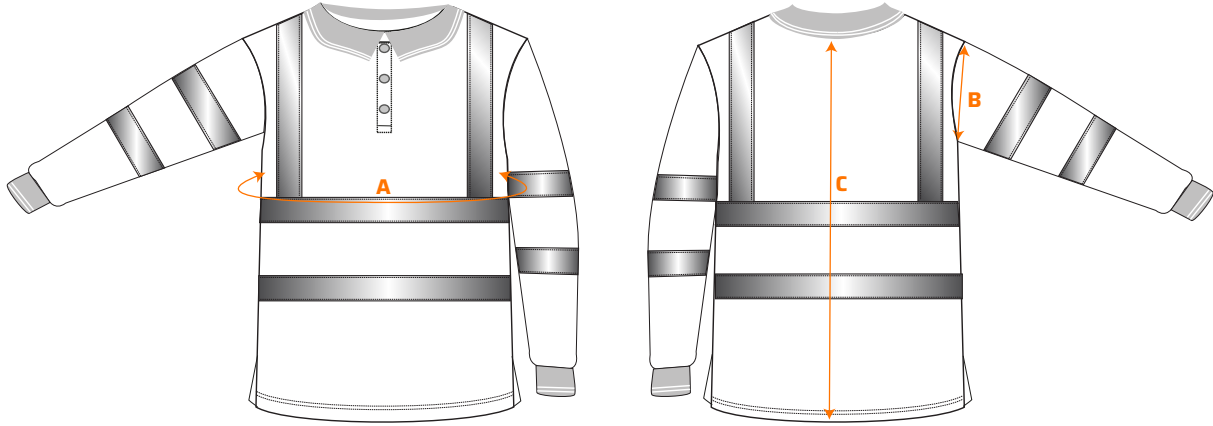
Composition and density: Shell Fabric: 100% Polyester, Bird Eye Knit - 175 g.

Available colors and sizes: ■ Yellow: XS - 6XL ■ Orange: XS - 6XL



HIGH VISIBILITY LONG SLEEVE POLO EN ISO 20471 CLASS 3 - S277

REF: 30104000000S277PW



Size chart:

Sizes (cm)		XS	S	M	L	XL	XXL	3XL	4XL	5XL	6XL
Chest contour	A	100	106	114	122	130	138	146	154	162	168
Arm hole	B	25	26	27	28	29	30	31	32	33	34
Length	C	76	76	76	76	76	76	78	78	80	80

Wash care:



EN ISO 20471 - Class 3
RIS 3279-TOM ISSUE 2 (ONLY ORANGE)