



TWO-TONE HIGH VISIBILITY LONG SLEEVE POLO EN ISO 2047 - S279

REF: 30104000000S279PW





Description:

This style combines all the benefits of our best selling long sleeve polo with the additional feature of two-toning for even more practical benefit. The polyester bird eye knit material used is breathable, light, and comfortable.

Features:

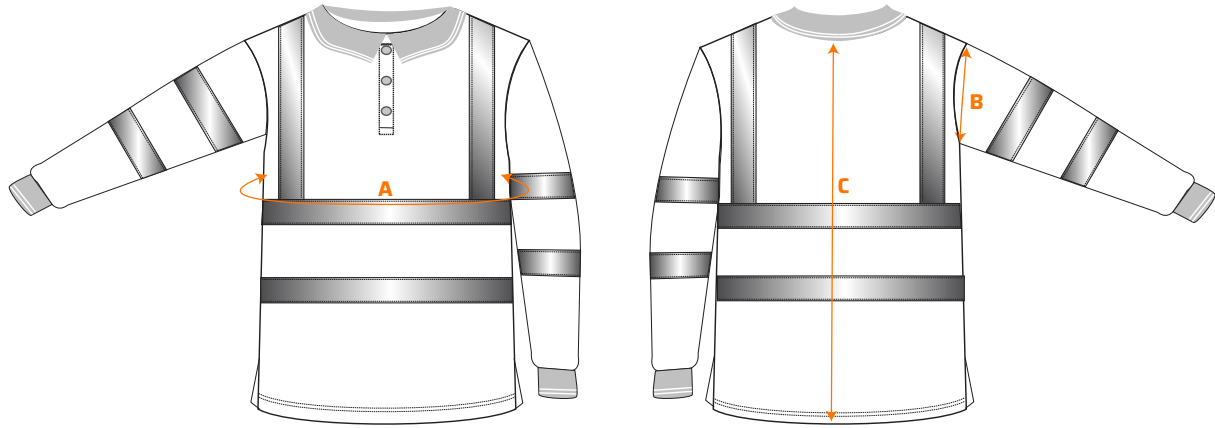
- CE certified
- Quality wicking fabric finish enhances drying and aids stain removal
- Reflective tape for increased visibility
- Contrast panels for protection against dirt
- Ribbed cuffs for added comfort
- Generous fit for wearer comfort
- Superior styling with a contrast collar and fluorescent stripe
- 40+ UPF rated fabric to block 98% of UV rays
- Breathable fabric to draw moisture away from the body keeping the wearer cool, dry and comfortable
- Certified to EN ISO 20471 after 50x washes
- Complies with RIS 3279-TOM for rail industry (orange only)

Composition and density: Shell Fabric: 100% Polyester, Bird Eye Knit - 175 g.

Available colors and sizes:  Yellow/Navy: S - 4XL  Orange/Navy: S - 4XL

TWO-TONE HIGH VISIBILITY LONG SLEEVE POLO EN ISO 2047 - S279

REF: 30104000000S279PW



Size chart:

Sizes (cm)		S	M	L	XL	XXL	3XL	4XL
Chest contour	A	106	114	122	130	138	146	154
Arm hole	B	26	27	28	29	30	31	32
Length	C	76	76	76	76	76	78	78

Wash care:



EN ISO 20471 - Class 2
RIS 3279-TOM ISSUE 2 (ONLY ORANGE)