



5 IN 1 HIGH VISIBILITY WATERPROOF PARKA WITH REFLECTIVE STRIPS - S766

REF: 30104000000S766PW



EN 342



EN 343 CLASS 3:1X



EN ISO 20471 CLASS 3



1 OUTER JACKET



2 OUTER JACKET WITH INNER JACKET



3 OUTER JACKET WITH INNER JACKET W/O SLEEVES



4 INNER JACKET WITH SLEEVES



5 PADDED VEST

Description:

An adaptable, functional style of parka offering excellent value for money. Outer jacket contains two useful large patch pockets with stud adjustable cuffs and a concealed adjustable hood, whilst the inner waterproof jacket has detachable fluorescent fleece sleeves, 2 spacious side pockets and has dark contrast panels for protection against dirt.

Features:

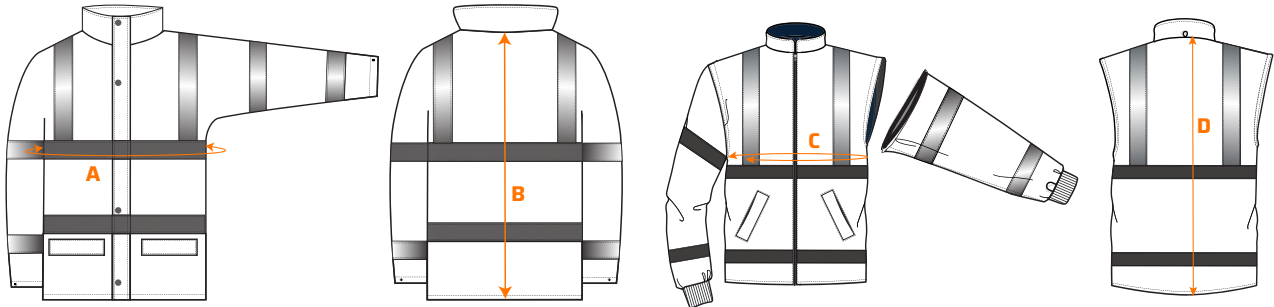
- CE certified
- Interactive inner garment
- Two-way zip for quick and easy access
- Jacket can be worn five ways for multi use
- 7 pockets for ample storage including concealed phone pocket
- Bio motion tape pattern to improve recognition of human shape at distance
- Stud adjustable cuffs for a secure fit
- Contrast panels for protection against dirt
- Pack away hood for added functionality
- Reflective tape for increased visibility
- 40+ UPF rated fabric to block 98% of UV rays
- Waterproof with taped seams preventing water penetration
- Extremely water resistant fabric finish, water beads away from fabric surface
- EN 342 Protection against cold certified up to -40°C
- Certified to EN ISO 20471 after 50x washes

Composition and density:

Shell Fabric: 300D Industry: 100% Polyester, 300D Oxford Weave with a Stain Resistant finish, Double PU Coated - 190 g.
Lining Fabric: Outer Jacket: 100% Polyester Mesh - 60 g. | Inner Jacket: 100% Polyester Fleece - 280 g.

5 IN 1 HIGH VISIBILITY WATERPROOF PARKA WITH REFLECTIVE STRIPS - S766

REF: 30104000000S766PW



Size chart (outer jacket):

Sizes (cm)		XS	S	M	L	XL	XXL	3XL	4XL	5XL
Chest contour	A	110	118	126	134	142	150	158	166	174
Length	B	79.5	81	82.5	84	85.5	87	88.5	90	91.5

Size chart (inner jacket):

Sizes (cm)		XS	S	M	L	XL	XXL	3XL	4XL	5XL
Chest contour	C	104	112	120	128	136	144	152	160	168
Length	D	104	112	120	128	136	144	152	160	168



Available colors and sizes:

- Yellow/Navy: XS - 5XL
- Yellow/Black: S - 3XL
- Orange/Navy: XS - 5XL

Wash care:



EN ISO 20471 - Class 3
 EN 342 (0.352 (M².K/W), 2, X)
 EN 343 - Class 3:1X (WP 15,000mm)
 RIS 3279-TOM ISSUE 2 (ONLY ORANGE)