



HIGH VISIBILITY TWO-TONE EXECUTIVE PARKA W/REFLECTIVE STRIPS - S768

REF: 30104000000S768PW



EN 342



EN 343
CLASS 3:1X



EN ISO 20471
CLASS 3



1 OUTER JACKET



2 OUTER JACKET WITH
INNER JACKET



3 OUTER JACKET WITH CASACO
INNER JACKET W/O SLEEVES



4 INNER JACKET
WITH SLEEVES



5 PADDED JACKET

Description:

An innovative style adaptable for multiple uses. Outer jacket contains two useful large patch pockets with hook and loop closures and a concealed hood, whilst the inner jacket has detachable fleece sleeves, 2 roomy side pockets and has full EN ISO 20471 Class 3 certification.

Features:

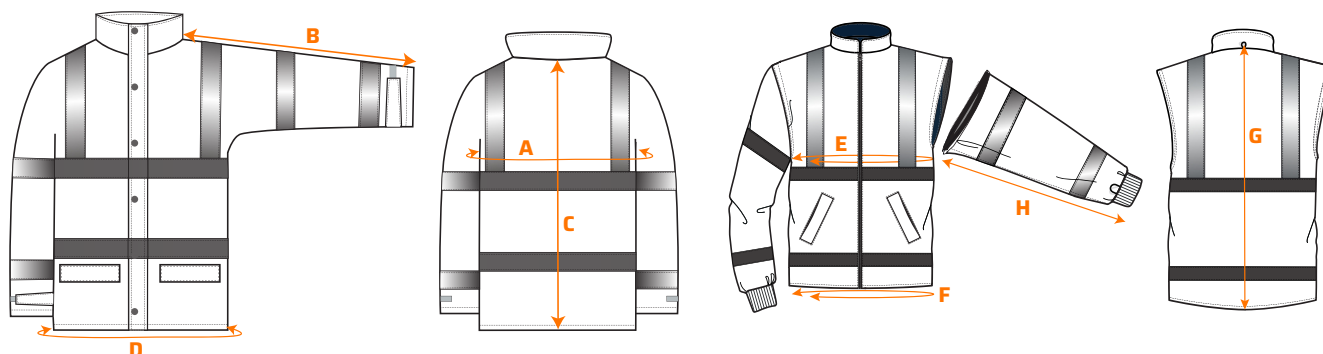
- Jacket can be worn five ways for multi use
- Hook and loop cuffs for a secure fit
- Contrast panels for protection against dirt
- Reflective tape for increased visibility
- Two-way zip for quick and easy access
- 7 pockets for ample storage including concealed phone pocket
- Pack away hood for added functionality
- 40+ UPF rated fabric to block 98% of UV rays
- Certified to EN ISO 20471 after 50x washes
- EN 342 Protection against cold certified up to -40°C
- Waterproof with taped seams preventing water penetration
- Extremely water resistant fabric finish, water beads away from fabric surface

Composition and density:

Shell Fabric: 300D Industry: 100% Polyester, 300D Oxford Weave with a Stain Resistant finish, Double PU Coated - 190 g.
Lining Fabric: 100% Polyester Mesh - 60 g. | Removeable Lining: 100% Polyester Fleece - 280 g.

HIGH VISIBILITY TWO-TONE EXECUTIVE PARKA W/REFLECTIVE STRIPS - S768

REF: 30104000000S768PW



Size chart (outer jacket):

Sizes (cm)		XS	S	M	L	XL	XXL	3XL	4XL	5XL
Chest	A	110	118	126	134	142	150	158	166	174
Sleeve length	B	79.5	81	82.5	84	85.5	87	88.5	90	91.5
Length	C	86	87	88	89	90	91	92	93	94
Hem	D	110	118	126	134	142	150	158	166	174

Size chart (inner jacket):

Sizes (cm)		XS	S	M	L	XL	XXL	3XL	4XL	5XL
Chest	E	104	112	120	128	136	144	152	160	168
Hem	F	104	112	120	128	136	144	152	160	168
Length	G	80	80	80	82	82	84	84	86	86
Sleeve length	H	56	57	58	59	60	61	62	63	64



Available colors and sizes:

- Yellow/Navy: XS - 5XL
- Yellow/Grey: S - 3XL
- Yellow/Black: S - 4XL
- Orange/Navy: XS - 5XL
- Red/Navy: S - 3XL

Wash care:



EN ISO 20471 - Class 3
EN 342 (0.352 (M².K/W), 2, X)
EN 343 - Class 3:1X (WP 15,000mm)
RIS 3279-TOM ISSUE 2 (ONLY ORANGE)