



HIGH VISIBILITY SHORT SLEEVE POLO PW3 - T180

REF: 30104000000T180PW



Description:

Constructed from premium breathable Cotton Comfort fabric combined with HiVisTex Pro tape, this polo shirt offers excellent comfort and movement. It features a loop at the placket ideal for attaching glasses/pens.

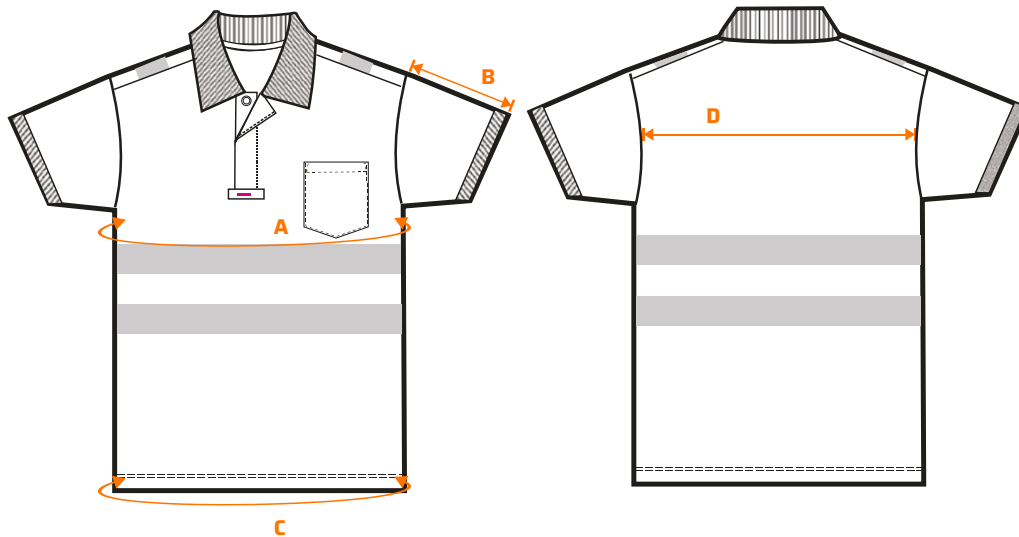
Features:

- Chest pocket
- Side vents for added comfort
- Contrast colouring for added style
- High cotton content for superior comfort
- Loop at placket ideal for attaching glasses/pens
- Superior styling with a contrast collar and fluorescent stripe
- Moisture wicking fabric helping to keep the body cool and dry
- Heat applied segmented reflective tape for added visibility
- Lightweight flexible HiVisTex Pro segmented reflective tape for increased visibility
- Certified to EN ISO 20471 after 50x washes
- 40+ UPF rated fabric to block 98% of UV rays
- Complies with RIS 3279-TOM for rail industry (orange only)

Composition and density: Shell Fabric: 55% Cotton / 45% Polyester, Knit - 175 g.

HIGH VISIBILITY SHORT SLEEVE POLO PW3 - T180

REF: 30104000000T180PW



Size chart:

| Sizes (cm) | | XS | S | M | L | XL | XXL | 3XL | 4XL | 5XL |
|---------------|---|-----|-----|-------|------|-------|-----|-------|------|-------|
| Chest | A | 102 | 106 | 114 | 122 | 134 | 142 | 150 | 158 | 166 |
| Sleeve length | B | 20 | 20 | 20.25 | 20.5 | 20.75 | 21 | 21.25 | 21.5 | 24.75 |
| Hem | C | 102 | 106 | 114 | 122 | 134 | 142 | 150 | 158 | 166 |
| Back width | D | 76 | 76 | 76 | 76 | 76 | 76 | 78 | 78 | 78 |



Available colors and sizes:

- Yellow/Navy: S - 3XL
- Yellow/Black: XS - 5XL
- Orange/Navy: S - 3XL
- Orange/Black: XS - 5XL

Wash care:



EN ISO 20471 - Class 2
RIS 3279-TOM ISSUE 2 (ONLY ORANGE)