



WINTER PARKA PW3 HI-VIS - T400

REF: 30104000000T400PW



EN 342



EN 343
CLASS 3:1X



EN ISO 20471
CLASS 3



Description:

The stylish and functional PW3 Hi-Vis Winter Jacket will ensure you stand out from the crowd. Made from our renowned 300D Oxford PU coated durable stain resistant fabric, this jacket includes many outstanding features including the new Insulatex heat reflective lining panel, which reflects heat back into the body ensuring maximum warmth and comfort, multiple zipped pockets for secure storage, Contemporary design and modern fit.

Features:

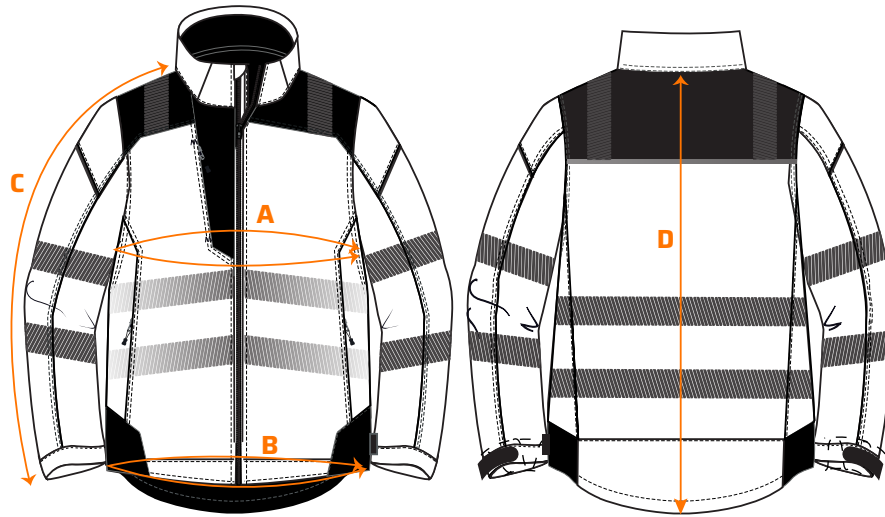
- Drawcord adjustable hem
- Concealed detachable hood
- Curved back hem for added protection
- Twin-stitched seams for extra durability
- Hook and loop cuffs for a secure fit
- Certified to EN ISO 20471 after 50x washes
- Quilt lined for thermal insulation
- EN 342 Protection against cold certified up to -40°C
- Quick dry knitted cuff for a snug and comfortable fit
- Contrast fleece collar for protection against dirt
- Lightweight flexible HiVisTex Pro segmented reflective tape for increased visibility
- 4 pockets for ample storage including concealed mobile phone pocket
- Heat applied segmented reflective tape for added visibility
- Waterproof with taped seams preventing water penetration
- Extremely water resistant fabric finish, water beads away from fabric surface
- Insulatex heat reflective lining reflects heat back into the body ensuring maximum warmth and comfort

Composition and density:

Shell Fabric: 300D Industry: 100% Polyester, 300D Oxford Weave with a Stain Resistant finish, Double PU Coated - 190 g.
Lining Fabric: 100% Polyester - 60 g. | Filling Fabric: 100% Polyester - 170 g.

WINTER PARKA PW3 HI-VIS - T400

REF: 30104000000T400PW



Size chart:

Sizes (cm)		X5	S	M	L	XL	XXL	3XL	4XL	5XL	6XL
Chest contour	A	102	110	118	126	134	142	150	158	170	182
Hem (relaxed)	B	98	106	114	122	130	138	146	154	166	178
Sleeve length	C	82.5	83.5	84.5	85.5	86.5	87.5	88.5	89.5	90.5	91.5
Length	D	80	81	82	83	84	85	86	87	88	89

Wash care:



Available colors and sizes:

- Orange/Black: XS - 4XL
- Orange/Grey: S - 3XL
- Orange/Navy: S - 4XL
- Yellow/Black: XS - 6XL
- Yellow/Grey: S - 3XL
- Yellow/Navy: S - 4XL
- Red/Black: S - 3XL



EN ISO 20471 - Class 3
 EN 342 (0.323 (M².K/W), 2, X)
 EN 343 - Class 3:1X (WP 15,000mm)
 RIS 3279-TOM ISSUE 2 (ONLY ORANGE)