



# NANTES HIGH VISIBILITY COVERALL - TX55

REF: 30104000000TX55PW



## Description:

This stylish Coverall offers complete certified protection for anyone working near motorways or traffic. Useful features include knee pad pockets and back elastics for ease of movement.

## Features:

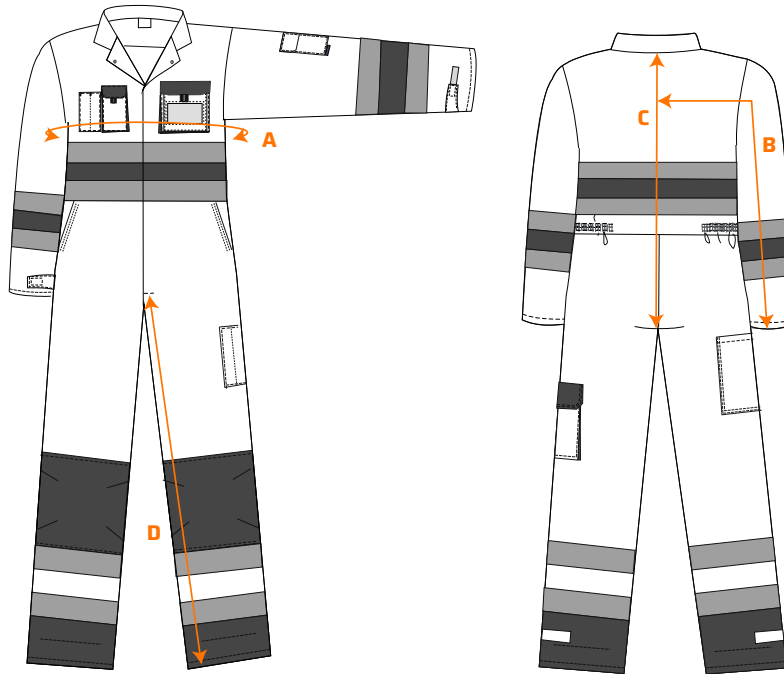
- Durable polyester/cotton fabric with Texpel stain resistant finish
- Reflective tape for increased visibility
- Two-way zip for quick and easy access
- Adjustable hem to accommodate all leg lengths
- Complies with RIS 3279-TOM for rail industry (orange only)
- 40+ UPF rated fabric to block 98% of UV rays
- Knee pad pockets to facilitate knee pads
- Hook and loop cuffs for a secure fit
- Certified to EN ISO 20471 after 50x washes
- Contrast colouring for added style
- Twin-stitched seams for extra durability
- Multiple utility pockets providing ample storage, 12 Pockets for ample storage, Rule pocket, Phone pocket
- Premium stain resistant finish repels oil, water and grime
- Complies with EN ISO 20471 standard

## Composition and density:

Shell Fabric: Kingsmill Hi-Vis: 65% Polyester, 35% Cotton 245g

# NANTES HIGH VISIBILITY COVERALL - TX55

REF: 30104000000TX55PW



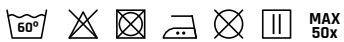
**Size chart:**

Sizes (cm)		S	M	L	XL	XXL	3XL
Chest	A	110	118	126	138	146	154
Sleeve length	B	80.5	81.5	82.5	84	85	86
Length	C	93	95	97	100	102	104
Leg length	D	78	78	78	78	78	78

Available colors and sizes: ■ Yellow/Navy Blue: S - 3XL

■ Orange/Navy Blue: S - 3XL

**Washing care:**



EN ISO 20471 Class 3  
RIS 3279 TOM Issue 1 (Orange Only)