



MODAFLAME SOFTSHELL JACKET - MV73

REF: 30113000000MV73PW



EN 13034



EN 1149-5



EN ISO 11611



IEC 61482-2
APC:2



Description:

The Modaflame Multi Norm Arc Softshell Jacket is constructed from a highly protective 3 layer softshell fabric. Using modacrylic and carbon fibre elements, this softshell provides flame, chemical and anti-static protection. An interactive zipper allows this softshell to be zipped into an outer jacket for additional insulation if required.

Features:

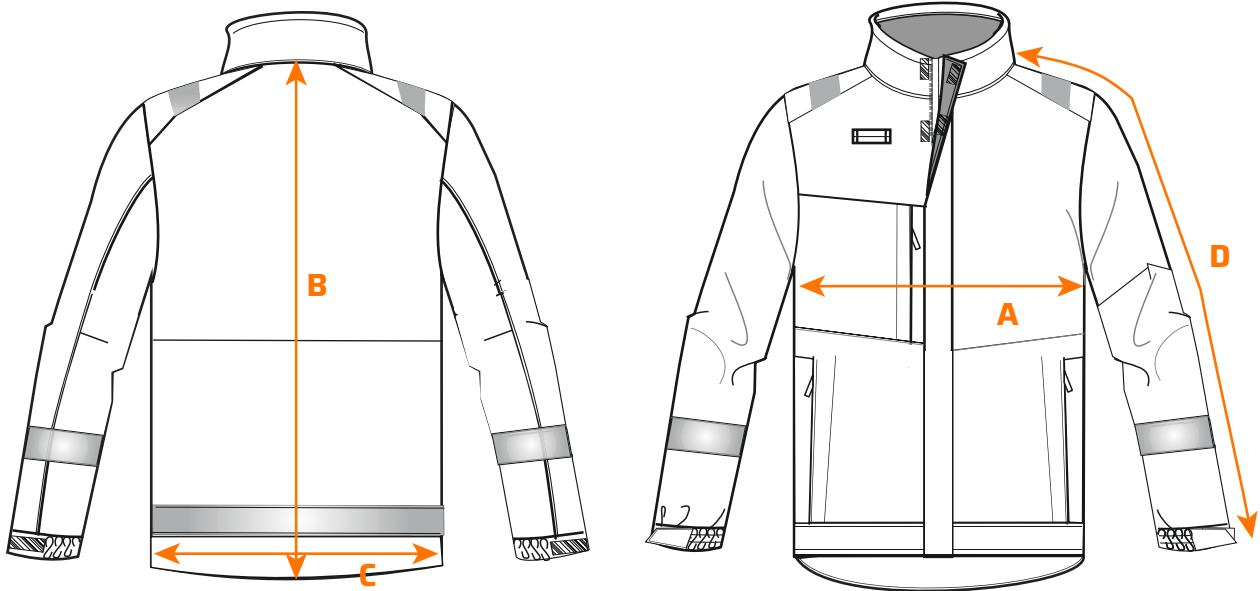
- Inherent flame resistant qualities will not diminish with washing
- Protects against radiant and convective heat
- Zipped pockets, 3 pockets for ample storage
- Drawcord adjustable hem
- Storm flap front to protect against the elements
- Hook and loop cuffs for a secure fit
- Anti-static
- Interactive zip for added functionality
- Radio loops for easy clipping of a radio
- Premium sew on flame resistant reflective tape
- CE-CAT III
- CE certified
- Wind resistant to protect against wind chill
- Made of durable breathable, windproof and water resistant fabric

Composition and density:

Shell Fabric: Modaflame Softshell: 100% Polyester 95g laminated to a TPU flame resistant membrane 35g and bonded with a 60% Modacrylic, 39% Cotton and 1% Carbon Fibre inherent flame resistant fleece 220g, total weight 350g

MODAFLAME SOFTSHELL JACKET - MV73

REF: 30113000000MV73PW



Size chart:

Sizes (cm)		S	M	L	XL	XXL	3XL
Chest	A	108	116	124	132	140	148
Length	B	75	75	77	77	77	79
Hem	C	100	108	116	124	132	140
Sleeve length	D	79	81	83	85	87	89

Available colors and sizes: ■ Navy Blue: S - 3XL

Washing care:



EN ISO 11612 A1 B1 C2
 EN ISO 11611 Class 2 A1
 EN 1149 -5
 IEC 61482-2 IEC 61482-1-2 APC 2
 IEC 61482-2 IEC 61482-1-1 ELIM 11 CAL/CM²
 EN 13034 Type PB [6]